



# basic education

Department:  
Basic Education  
**REPUBLIC OF SOUTH AFRICA**

**NATIONAL  
SENIOR CERTIFICATE**

**GRADE 12**

**MATHEMATICS P1**

**NOVEMBER 2018**

**MARKS: 150**

**TIME: 3 hours**

**This question paper consists of 9 pages and 1 information sheet.**

**INSTRUCTIONS AND INFORMATION**

Read the following instructions carefully before answering the questions.

1. This question paper consists of 12 questions.
2. Answer ALL the questions.
3. Number the answers correctly according to the numbering system used in this question paper.
4. Clearly show ALL calculations, diagrams, graphs, etc. that you have used in determining your answers.
5. Answers only will NOT necessarily be awarded full marks.
6. You may use an approved scientific calculator (non-programmable and non-graphical), unless stated otherwise.
7. If necessary, round off answers to TWO decimal places, unless stated otherwise.
8. Diagrams are NOT necessarily drawn to scale.
9. An information sheet with formulae is included at the end of the question paper.
10. Write neatly and legibly.

**QUESTION 1**1.1 Solve for  $x$ :

1.1.1  $x^2 - 4x + 3 = 0$  (3)

1.1.2  $5x^2 - 5x + 1 = 0$  (correct to TWO decimal places) (3)

1.1.3  $x^2 - 3x - 10 > 0$  (3)

1.1.4  $3\sqrt{x} = x - 4$  (4)

1.2 Solve simultaneously for  $x$  and  $y$ :

$3x - y = 2$  and  $2y + 9x^2 = -1$  (6)

1.3 If  $3^{9x} = 64$  and  $5^{\sqrt{p}} = 64$ , calculate, WITHOUT the use of a calculator, the value of:  $\frac{[3^{x-1}]^3}{\sqrt{5^{\sqrt{p}}}}$  (4)**[23]****QUESTION 2**

2.1 Given the quadratic sequence: 2 ; 3 ; 10 ; 23 ; ...

2.1.1 Write down the next term of the sequence. (1)

2.1.2 Determine the  $n^{\text{th}}$  term of the sequence. (4)2.1.3 Calculate the 20<sup>th</sup> term of the sequence. (2)

2.2 Given the arithmetic sequence: 35 ; 28 ; 21 ; ...

Calculate which term of the sequence will have a value of  $-140$ . (3)2.3 For which value of  $n$  will the sum of the first  $n$  terms of the arithmetic sequence in QUESTION 2.2 be equal to the  $n^{\text{th}}$  term of the quadratic sequence in QUESTION 2.1? (6)**[16]**

**QUESTION 3**

A geometric series has a constant ratio of  $\frac{1}{2}$  and a sum to infinity of 6.

3.1 Calculate the first term of the series. (2)

3.2 Calculate the 8<sup>th</sup> term of the series. (2)

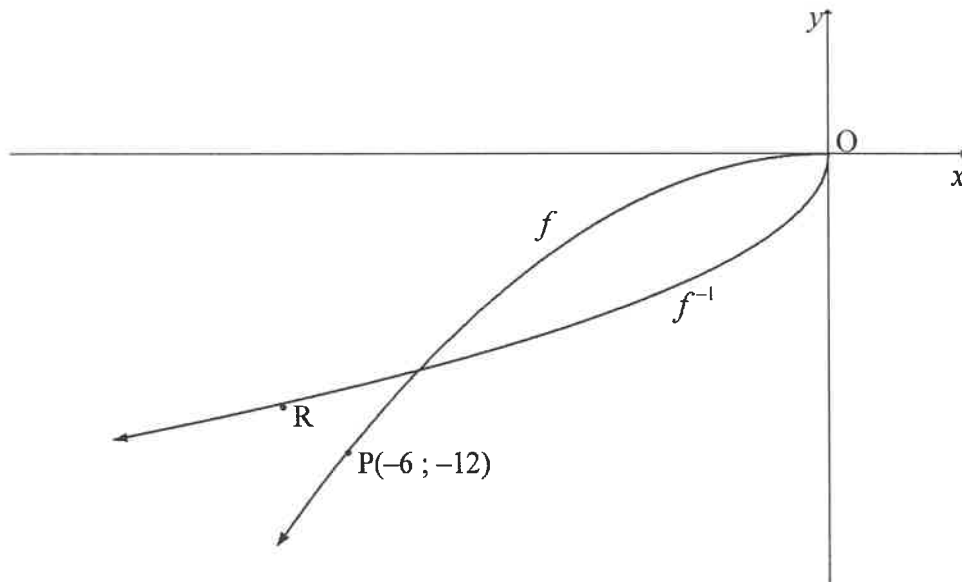
3.3 Given:  $\sum_{k=1}^n 3(2)^{1-k} = 5,8125$  Calculate the value of  $n$ . (4)

3.4 If  $\sum_{k=1}^{20} 3(2)^{1-k} = p$ , write down  $\sum_{k=1}^{20} 24(2)^{-k}$  in terms of  $p$ . (3)  
[11]

**QUESTION 4**

In the diagram below, the graph of  $f(x) = ax^2$  is drawn in the interval  $x \leq 0$ .

The graph of  $f^{-1}$  is also drawn.  $P(-6; -12)$  is a point on  $f$  and  $R$  is a point on  $f^{-1}$ .



4.1 Is  $f^{-1}$  a function? Motivate your answer. (2)

4.2 If  $R$  is the reflection of  $P$  in the line  $y = x$ , write down the coordinates of  $R$ . (1)

4.3 Calculate the value of  $a$ . (2)

4.4 Write down the equation of  $f^{-1}$  in the form  $y = \dots$  (3)  
[8]

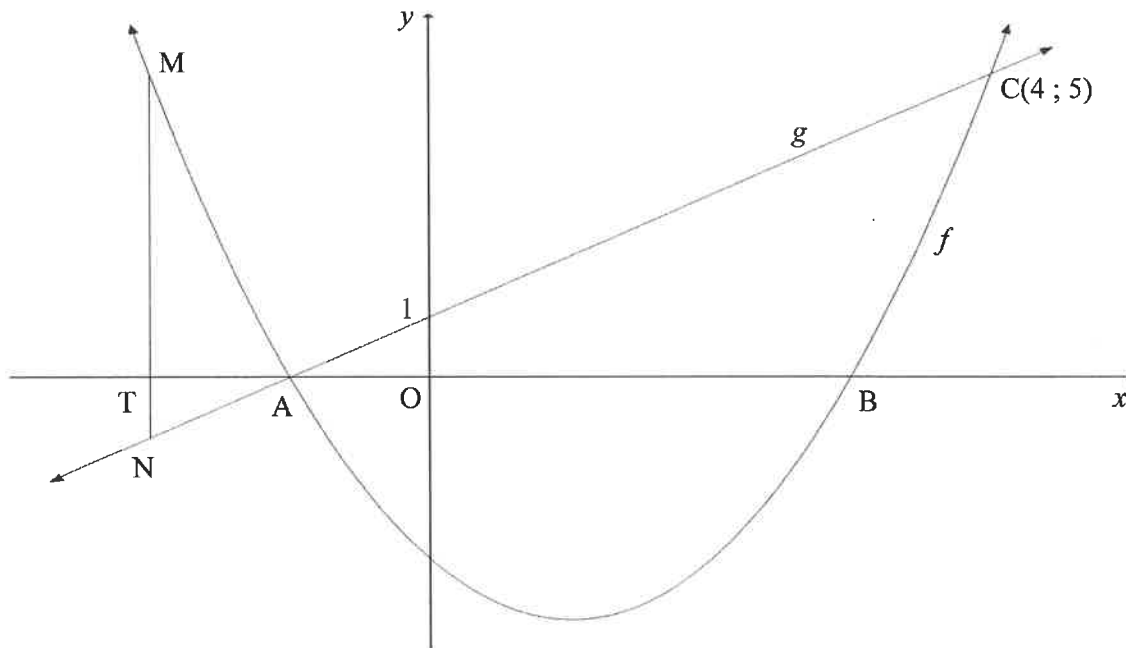
**QUESTION 5**

Given:  $f(x) = \frac{-1}{x-1}$

- 5.1 Write down the domain of  $f$ . (1)
- 5.2 Write down the asymptotes of  $f$ . (2)
- 5.3 Sketch the graph of  $f$ , clearly showing all intercepts with the axes and any asymptotes. (3)
- 5.4 For which values of  $x$  will  $x \cdot f'(x) \geq 0$ ? (2)
- [8]**

**QUESTION 6**

In the diagram below, A and B are the  $x$ -intercepts of the graph of  $f(x) = x^2 - 2x - 3$ . A straight line,  $g$ , through A cuts  $f$  at  $C(4; 5)$  and the  $y$ -axis at  $(0; 1)$ . M is a point on  $f$  and N is a point on  $g$  such that MN is parallel to the  $y$ -axis. MN cuts the  $x$ -axis at T.



- 6.1 Show that  $g(x) = x + 1$ . (2)
- 6.2 Calculate the coordinates of A and B. (3)
- 6.3 Determine the range of  $f$ . (3)
- 6.4 If  $MN = 6$ :
- 6.4.1 Determine the length of OT if T lies on the negative  $x$ -axis. Show ALL your working. (4)
- 6.4.2 Hence, write down the coordinates of N. (2)
- 6.5 Determine the equation of the tangent to  $f$  drawn parallel to  $g$ . (5)
- 6.6 For which value(s) of  $k$  will  $f(x) = x^2 - 2x - 3$  and  $h(x) = x + k$  NOT intersect? (1)
- [20]**

**QUESTION 7**

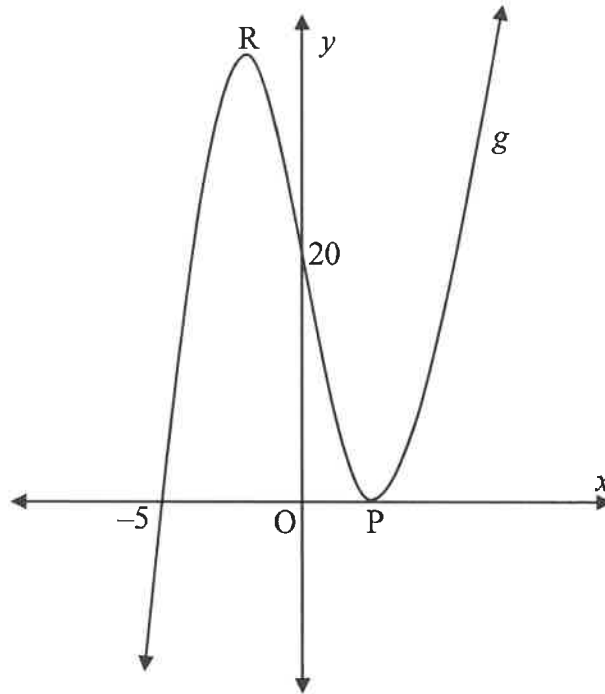
- 7.1 Selby decided today that he will save R15 000 per quarter over the next four years. He will make the first deposit into a savings account in three months' time and he will make his last deposit at the end of four years from now.
- 7.1.1 How much will Selby have at the end of four years if interest is earned at 8,8% per annum, compounded quarterly? (3)
- 7.1.2 If Selby decides to withdraw R100 000 from the account at the end of three years from now, how much will he have in the account at the end of four years from now? (3)
- 7.2 Tshepo takes out a home loan over 20 years to buy a house that costs R1 500 000.
- 7.2.1 Calculate the monthly instalment if interest is charged at 10,5% p.a., compounded monthly. (4)
- 7.2.2 Calculate the outstanding balance immediately after the 144<sup>th</sup> payment was made. (5)
- [15]**

**QUESTION 8**

- 8.1 Determine  $f'(x)$  from first principles if it is given  $f(x) = x^2 - 5$ . (5)
- 8.2 Determine  $\frac{dy}{dx}$  if:
- 8.2.1  $y = 3x^3 + 6x^2 + x - 4$  (3)
- 8.2.2  $yx - y = 2x^2 - 2x$  ;  $x \neq 1$  (4)
- [12]**

**QUESTION 9**

- 9.1 The graph of  $g(x) = x^3 + bx^2 + cx + d$  is sketched below.  
The graph of  $g$  intersects the  $x$ -axis at  $(-5 ; 0)$  and at  $P$ , and the  $y$ -axis at  $(0 ; 20)$ .  
 $P$  and  $R$  are turning points of  $g$ .

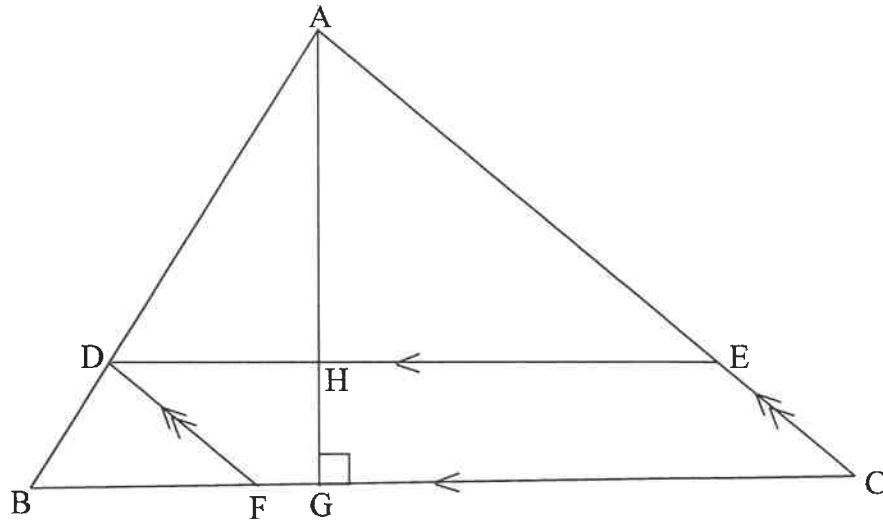


- 9.1.1 Show that  $b = 1$ ,  $c = -16$  and  $d = 20$ . (4)
- 9.1.2 Calculate the coordinates of  $P$  and  $R$ . (5)
- 9.1.3 Is the graph concave up or concave down at  $(0 ; 20)$ ? Show ALL your calculations. (3)
- 9.2 If  $g$  is a cubic function with:
- $g(3) = g'(3) = 0$
  - $g(0) = 27$
  - $g''(x) > 0$  when  $x < 3$  and  $g''(x) < 0$  when  $x > 3$ ,
- draw a sketch graph of  $g$  indicating ALL relevant points. (3)
- [15]

**QUESTION 10**

In  $\triangle ABC$ :

- D is a point on AB, E is a point on AC and F is a point on BC such that DECF is a parallelogram.
- $BF : FC = 2 : 3$ .
- The perpendicular height AG is drawn intersecting DE at H.
- $AG = t$  units.
- $BC = (5 - t)$  units.



10.1 Write down  $AH : HG$ . (1)

10.2 Calculate  $t$  if the area of the parallelogram is a maximum.  
(NOTE: Area of a parallelogram = base  $\times$   $\perp$  height) (5)  
[6]

**QUESTION 11**

Given the digits: 3 ; 4 ; 5 ; 6 ; 7 ; 8 and 9

11.1 Calculate how many unique 5-digit codes can be formed using the digits above, if:

11.1.1 The digits may be repeated (2)

11.1.2 The digits may not be repeated (2)

11.2 How many unique 3-digit codes can be formed using the above digits, if:

- Digits may be repeated
- The code is greater than 400 but less than 600
- The code is divisible by 5

(3)  
[7]



**QUESTION 12**

12.1 Given:  $P(A) = 0,45$ ;  $P(B) = y$  and  $P(A \text{ or } B) = 0,74$

Determine the value(s) of  $y$  if A and B are mutually exclusive. (3)

12.2 An organisation decided to distribute gift bags of sweets to a Grade R class at a certain school. There is a mystery gift in exactly  $\frac{1}{4}$  of the total number of bags.

Each learner in the class may randomly select two gift bags of sweets, one after the other. The probability that a learner selects two bags of sweets with a mystery gift is  $\frac{7}{118}$ . Calculate the number of gift bags of sweets with a mystery gift inside. (6)

[9]

**TOTAL: 150**

## INFORMATION SHEET

$$x = \frac{-b \pm \sqrt{b^2 - 4ac}}{2a}$$

$$A = P(1 + ni)$$

$$A = P(1 - ni)$$

$$A = P(1 - i)^n$$

$$A = P(1 + i)^n$$

$$T_n = a + (n - 1)d$$

$$S_n = \frac{n}{2}[2a + (n - 1)d]$$

$$T_n = ar^{n-1}$$

$$S_n = \frac{a(r^n - 1)}{r - 1}; r \neq 1$$

$$S_\infty = \frac{a}{1 - r}; -1 < r < 1$$

$$F = \frac{x[(1 + i)^n - 1]}{i}$$

$$P = \frac{x[1 - (1 + i)^{-n}]}{i}$$

$$f'(x) = \lim_{h \rightarrow 0} \frac{f(x + h) - f(x)}{h}$$

$$d = \sqrt{(x_2 - x_1)^2 + (y_2 - y_1)^2}$$

$$M\left(\frac{x_1 + x_2}{2}; \frac{y_1 + y_2}{2}\right)$$

$$y = mx + c$$

$$y - y_1 = m(x - x_1)$$

$$m = \frac{y_2 - y_1}{x_2 - x_1}$$

$$m = \tan \theta$$

$$(x - a)^2 + (y - b)^2 = r^2$$

$$\text{In } \triangle ABC: \frac{a}{\sin A} = \frac{b}{\sin B} = \frac{c}{\sin C}$$

$$a^2 = b^2 + c^2 - 2bc \cdot \cos A$$

$$\text{area } \triangle ABC = \frac{1}{2} ab \cdot \sin C$$

$$\sin(\alpha + \beta) = \sin \alpha \cdot \cos \beta + \cos \alpha \cdot \sin \beta$$

$$\sin(\alpha - \beta) = \sin \alpha \cdot \cos \beta - \cos \alpha \cdot \sin \beta$$

$$\cos(\alpha + \beta) = \cos \alpha \cdot \cos \beta - \sin \alpha \cdot \sin \beta$$

$$\cos(\alpha - \beta) = \cos \alpha \cdot \cos \beta + \sin \alpha \cdot \sin \beta$$

$$\cos 2\alpha = \begin{cases} \cos^2 \alpha - \sin^2 \alpha \\ 1 - 2\sin^2 \alpha \\ 2\cos^2 \alpha - 1 \end{cases}$$

$$\sin 2\alpha = 2\sin \alpha \cdot \cos \alpha$$

$$\bar{x} = \frac{\sum x}{n}$$

$$\sigma^2 = \frac{\sum_{i=1}^n (x_i - \bar{x})^2}{n}$$

$$P(A) = \frac{n(A)}{n(S)}$$

$$P(A \text{ or } B) = P(A) + P(B) - P(A \text{ and } B)$$

$$\hat{y} = a + bx$$

$$b = \frac{\sum (x - \bar{x})(y - \bar{y})}{\sum (x - \bar{x})^2}$$



# basic education

Department:  
Basic Education  
**REPUBLIC OF SOUTH AFRICA**

**NATIONAL  
SENIOR CERTIFICATE/  
NASIONALE SENIOR  
SERTIFIKAAT**

**GRADE 12/GRAAD 12**

**MATHEMATICS P1/WISKUNDE VI**

**NOVEMBER 2018**

**MARKING GUIDELINES/NASIENRIGLYNE**

**MARKS: 150**

**PUNTE: 150**

**These marking guidelines consist of 18 pages.  
*Hierdie nasienriglyne bestaan uit 18 bladsye***

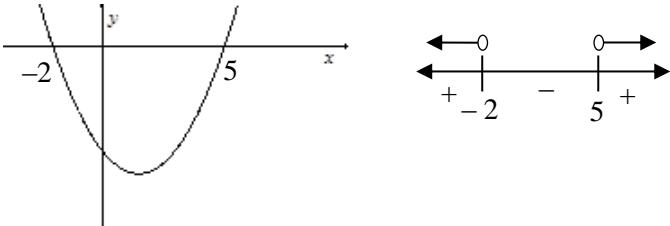
**NOTE:**

- If a candidate answers a question TWICE, only mark the FIRST attempt.
- Consistent Accuracy applies in all aspects of the marking memorandum.

**LET WEL:**

- Indien 'n kandidaat 'n vraag TWEE keer beantwoord, merk slegs die EERSTE poging.
- Volgehoue akkuraatheid is op ALLE aspekte van die nasienriglyne van toepassing.

**QUESTION/VRAAG 1**

<p>1.1.1</p>	$x^2 - 4x + 3 = 0$ $(x - 3)(x - 1) = 0$ $x = 3 \text{ or } x = 1$	<p>✓ factors/correct sub in formula                  ✓ <math>x = 3</math>                  ✓ <math>x = 1</math></p> <p style="text-align: right;">(3)</p>
<p>1.1.2</p>	$5x^2 - 5x + 1 = 0$ $x = \frac{-b \pm \sqrt{b^2 - 4ac}}{2a}$ $= \frac{5 \pm \sqrt{25 - 4(5)(1)}}{2(5)}$ $= \frac{5 \pm \sqrt{5}}{10}$ $x = 0,72 \text{ or } x = 0,28$	<p>✓ substitution into the correct formula</p> <p>✓ <math>x = 0,72</math>                  ✓ <math>x = 0,28</math></p> <p style="text-align: right;">(3)</p>
<p>1.1.3</p>	$x^2 - 3x - 10 > 0$ $(x - 5)(x + 2) > 0$ <p><b>OR/OF</b></p>  $x < -2 \text{ or } x > 5$	<p>✓ factors/ critical values</p> <p>✓✓ <math>x &lt; -2 \text{ or } x &gt; 5</math></p> <p style="text-align: right;">(3)</p>
<p>1.1.4</p>	$3\sqrt{x} = x - 4$ $9x = x^2 - 8x + 16$ $x^2 - 17x + 16 = 0$ $(x - 16)(x - 1) = 0$ $x = 16 \text{ or } x = 1$ <p style="text-align: center;">NA</p>	<p>✓ squaring both sides                  ✓ <math>x^2 - 17x + 16 = 0</math>                  ✓ factors                  ✓ answer with selection</p> <p style="text-align: right;">(4)</p>

	<p><b>OR/OF</b></p> $\frac{1}{3x^2} = x - 4$ $x - 3x^{\frac{1}{2}} - 4 = 0$ $\left(x^{\frac{1}{2}} - 4\right)\left(x^{\frac{1}{2}} + 1\right) = 0$ $\frac{1}{x^2} = 4 \quad \text{or} \quad \frac{1}{x^2} = -1$ $x = 16 \quad \quad \quad \text{NA}$	<p><b>OR/OF</b></p> <ul style="list-style-type: none"> <li>✓ standard form</li> <li>✓ recognize <math>x = \left(x^{\frac{1}{2}}\right)^2</math></li> <li>✓ factors</li> <li>✓ answer with selection</li> </ul> <p style="text-align: right;">(4)</p>
<p>1.2</p>	<p> <math>2y + 9x^2 = -1 \dots\dots(1)</math>  <math>3x - y = 2 \dots\dots (2)</math>  <math>y = 3x - 2 \dots\dots(3)</math>  <math>2(3x - 2) + 9x^2 = -1</math>  <math>6x - 4 + 9x^2 = -1</math>  <math>9x^2 + 6x - 3 = 0</math>  <math>3x^2 + 2x - 1 = 0</math>  <math>(3x - 1)(x + 1) = 0</math>  <math>x = \frac{1}{3} \quad \text{or} \quad x = -1</math>  <math>y = -1 \quad \text{or} \quad y = -5</math> </p> <p><b>OR/OF</b></p> <p> <math>2y + 9x^2 = -1 \dots\dots(1)</math>  <math>3x - y = 2 \dots\dots (2)</math>  <math>x = \frac{y + 2}{3}</math>  <math>2y + 9\left(\frac{y + 2}{3}\right)^2 = -1</math>  <math>2y + 9\left(\frac{y^2 + 4y + 4}{9}\right) = -1</math>  <math>2y + y^2 + 4y + 4 + 1 = 0</math>  <math>y^2 + 6y + 5 = 0</math>  <math>(y + 5)(y + 1) = 0</math>  <math>y = -1 \quad \text{or} \quad y = -5</math>  <math>x = \frac{1}{3} \quad \text{or} \quad x = -1</math> </p>	<ul style="list-style-type: none"> <li>✓ <math>y = 3x - 2</math></li> <li>✓ substitution</li> </ul> <ul style="list-style-type: none"> <li>✓ standard form</li> <li>✓ factors</li> <li>✓ both <math>x</math> values</li> <li>✓ both <math>y</math> values</li> </ul> <p style="text-align: right;">(6)</p> <p><b>OR/OF</b></p> <ul style="list-style-type: none"> <li>✓ <math>x = \frac{y + 2}{3}</math></li> <li>✓ substitution</li> </ul> <ul style="list-style-type: none"> <li>✓ standard form</li> <li>✓ factors</li> <li>✓ both <math>y</math> values</li> <li>✓ both <math>x</math> values</li> </ul> <p style="text-align: right;">(6)</p>

<p>1.3</p>	$3^{9x} = 64$ $(3^{3x})^3 = (4)^3$ $3^{3x} = 4$ $5^{\sqrt{p}} = 64$ $\sqrt{5}^{\sqrt{p}} = \sqrt{64}$ $\sqrt{5}^{\sqrt{p}} = 8$ $\frac{[3^{x-1}]^3}{\sqrt{5}^{\sqrt{p}}} = \frac{3^{3x-3}}{\sqrt{5}^{\sqrt{p}}}$ $= \frac{3^{3x}}{27 \times \sqrt{5}^{\sqrt{p}}}$ $= \frac{4}{27 \times 8}$ $= \frac{1}{54}$ <p><b>OR/OF</b></p> $\frac{(3^{x-1})^3}{\sqrt{5}^{\sqrt{p}}} = \frac{3^{3x} \cdot 3^{-3}}{(5^{0.5})^{\sqrt{p}}}$ $= \frac{3^{3x} \cdot 3^{-3}}{(5^{\sqrt{p}})^{0.5}}$ $= \frac{4 \cdot 3^{-3}}{\sqrt{64}}$ $= \frac{4 \cdot \frac{1}{27}}{8} = \frac{1}{54}$ <p><b>OR/OF</b></p> $= \frac{3^{3x} \cdot 3^{-3}}{5^{\frac{\sqrt{p}}{2}}}$ $= \frac{\sqrt[3]{64 \cdot 3^{-3}}}{\sqrt{64}}$	<p>✓ <math>3^{3x} = 4</math></p> <p>✓ <math>\sqrt{5}^{\sqrt{p}} = 8</math></p> <p>✓ <math>3^{3x-3}</math> or <math>3^{3x} \cdot 3^{-3}</math></p> <p>✓ answer (4)</p> <p><b>OR/OF</b></p> <p>✓ <math>3^{3x-3}</math> or <math>3^{3x} \cdot 3^{-3}</math></p> <p>✓ <math>3^{3x} = 4</math></p> <p>✓ <math>\sqrt{5}^{\sqrt{p}} = 8</math></p> <p>✓ answer (4)</p> <p><b>[23]</b></p>
------------	--	--

**QUESTION/VRAAG 2**

2.1.1	42	✓ answer (1)
2.1.2	$2a = 6$ $a = 3$ $T_n = 3n^2 - 8n + 7$ <p><b>OR/OF</b></p> $2a = 6$ $a = 3$ $T_n = 3n^2 + bn + c$ $T_1 : 3 + b + c = 2$ $T_2 : 12 + 2b + c = 3$ $T_2 - T_1 : b = -8$ <p>Subst. in (1): <math>-8 + c = -1</math></p> $c = 7$ $T_n = 3n^2 - 8n + 7$	$3a + b = 1$ $3(3) + b = 1$ $b = -8$ $a + b + c = 2$ $(3) + (-8) + c = 2$ $c = 7$ <p><b>OR/OF</b></p> $b + c = -1 \dots\dots(1)$ $2b + c = -9 \dots\dots(2)$ $b = -8$ $-8 + c = -1$ $c = 7$
2.1.3	$T_{20} = 3(20)^2 - 8(20) + 7$ $= 1047$	✓ substitution ✓ answer (2)
2.2	$T_n = -7n + 42$ $-7n + 42 = -140$ $-7n = -182$ $n = 26$	✓ $T_n = -7n + 42$ ✓ $-7n + 42 = -140$ ✓ $n = 26$ (3)
2.3	$S_n = \frac{n}{2}(a + l)$ $S_n = \frac{n}{2}(35 - 7n + 42)$ $S_n = \frac{n}{2}(-7n + 77)$ $S_n = -\frac{7}{2}n^2 + \frac{77}{2}n$ $-\frac{7}{2}n^2 + \frac{77}{2}n = 3n^2 - 8n + 7$ $13n^2 - 93n + 14 = 0$ $(n - 7)(13n - 2) = 0$ $n = 7 \text{ or } n = \frac{2}{13}$ <p>NA</p> $\therefore n = 7$	<p><b>OR/OF</b> <math>S_n = \frac{n}{2}[2a + (n - 1)d]</math></p> $S_n = \frac{n}{2}(70 - 7n + 7)$ $S_n = \frac{n}{2}(35 - 7n + 42) \text{ or}$ $S_n = \frac{n}{2}(70 - 7n + 7)$ <p>✓ simplification of <math>S_n</math>                  ✓ equating                  ✓ standard form                  ✓ factors                  ✓ answer with selection                  (6)</p>
		<b>[16]</b>

**QUESTION/VRAAG 3**

3.1	$r = \frac{1}{2} \text{ and } S_{\infty} = 6$ $S_{\infty} = \frac{a}{1-r}$ $6 = \frac{a}{1-\frac{1}{2}}$ $a = 3$	<p>✓ substitution</p> <p>✓ answer</p> <p style="text-align: right;">(2)</p>
3.2	$T_n = ar^{n-1}$ $T_8 = 3\left(\frac{1}{2}\right)^7$ $T_8 = \frac{3}{128}$	<p>✓✓ <math>T_8 = 3\left(\frac{1}{2}\right)^7</math></p> <p style="text-align: right;">(2)</p>
3.3	$\sum_{k=1}^n 3(2)^{1-k} = 5,8125$ $3 + \frac{3}{2} + \frac{3}{4} + \dots = 5,8125$ $S_n = \frac{a(1-r^n)}{1-r} = 5,8125$ $\frac{3\left[1 - \left(\frac{1}{2}\right)^n\right]}{1 - \frac{1}{2}} = 5,8125$ $6\left[1 - \left(\frac{1}{2}\right)^n\right] = 5,8125$ $\left(\frac{1}{2}\right)^n = \frac{1}{32} = 0,03125$ $2^{-n} = 2^{-5} \quad \text{or} \quad n \log \frac{1}{2} = \log \frac{1}{32}$ $n = 5 \quad \quad \quad n = 5$	<p>✓ <math>r = \frac{1}{2}</math></p> <p>✓ substitution</p> <p>✓ simplification</p> <p>✓ answer</p> <p style="text-align: right;">(4)</p>

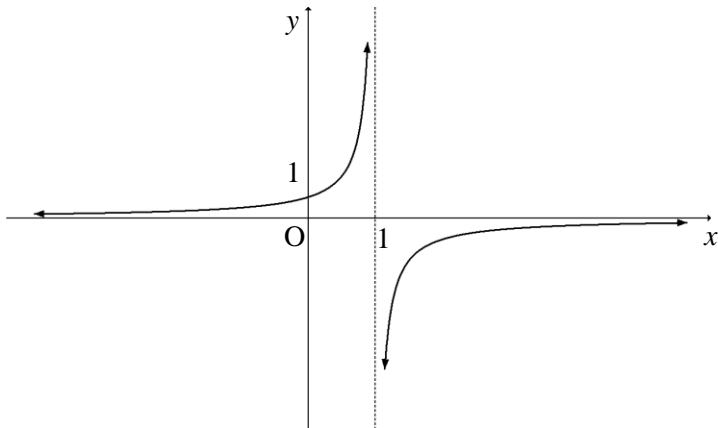


<p>3.4</p>	$\sum_{k=1}^{20} 3(2)^{1-k} = p$ $3 + \frac{3}{2} + \frac{3}{4} + \dots + 3 \cdot 2^{-19} = p$ $\sum_{k=1}^{20} 24(2)^{-k}$ $= 12 + 6 + 3 + \dots + 24 \cdot 2^{-20}$ $= 4 \left( 3 + \frac{3}{2} + \frac{3}{4} + \dots + 3 \cdot 2^{-19} \right)$ $= 4p$ <p><b>OR/OF</b></p> $\sum_{k=1}^{20} 3(2)^{1-k} = p$ $\sum_{k=1}^{20} 6(2)^{-k} = p$ $\therefore \sum_{k=1}^{20} 24(2)^{-k} = 4p$ <p><b>OR/OF</b></p> $\sum_{k=1}^{20} 24(2)^{-k} = \sum_{k=1}^{20} 4 \times 3 \times 2(2)^{-k}$ $= 4 \sum_{k=1}^{20} 3 \times 2(2)^{-k}$ $= 4 \sum_{k=1}^{20} 3 \times (2)^{1-k} = 4p$ <p><b>OR/OF</b></p> $S_{20} = \frac{3 \left( \left( \frac{1}{2} \right)^{20} - 1 \right)}{\frac{1}{2} - 1} = 6 = p$ $S_{20} = \frac{12 \left( \left( \frac{1}{2} \right)^{20} - 1 \right)}{\frac{1}{2} - 1} = 24$ $24 = 4 \times 6 = 4p$	<p>✓ expansion</p> <p>✓ expansion</p> <p>✓ answer (3)</p> <p><b>OR/OF</b></p> <p>✓ <math>\sum_{k=1}^{20} 6(2)^{-k} = p</math></p> <p>✓ <math>\sum_{k=1}^{20} 4 \times 6(2)^{-k}</math></p> <p>✓ <math>4p</math> (3)</p> <p><b>OR/OF</b></p> <p>✓ <math>\sum_{k=1}^{20} 4 \times 3 \times 2(2)^{-k}</math></p> <p>✓ <math>4 \sum_{k=1}^{20} 3 \times 2(2)^{-k}</math></p> <p>✓ <math>4p</math> (3)</p> <p><b>OR/OF</b></p> <p>✓ substitution and answer</p> <p>✓ substitution and answer</p> <p>✓ <math>4p</math> (3)</p> <p style="text-align: right;"><b>[11]</b></p>
------------	--	--

**QUESTION/VRAAG 4**

4.1	Yes For every $x$ -value there is only one corresponding $y$ value <b>OR/OF</b> One to one mapping (vertical line test)	✓ answer ✓ reason  (2)
4.2	$R(-12 ; -6)$	✓ answer (1)
4.3	$f(x) = ax^2$ substitute $(-6 ; -12)$ $-12 = a(-6)^2$ $a = \frac{-1}{3}$	✓ substitution ✓ answer (2)
4.4	$f : y = -\left(\frac{1}{3}\right)x^2$ $f^{-1} : x = -\left(\frac{1}{3}\right)y^2$ $y^2 = -3x$ $y = \pm\sqrt{-3x}$ Only $y = -\sqrt{-3x}$ and $x \leq 0$	✓ swapping $x$ and $y$ ✓ $y^2 = -3x$ ✓ $y = -\sqrt{-3x}$ (3)
		<b>[8]</b>

**QUESTION/VRAAG 5**

5.1	Domain: $x \in R ; x \neq 1$ <b>OR/OF</b> $x \in (-\infty;1) \cup (1;\infty)$	✓ answer (1)
5.2	$x = 1$ $y = 0$	✓ $x = 1$ ✓ $y = 0$ (2)
5.3		✓ $y$ intercept ✓ vertical asymptote ✓ shape (3)
5.4	$x \geq 0 ; x \neq 1$ <b>OR/OF</b> $0 \leq x < 1$ or $x > 1$ <b>OR/OF</b> $x \in [0;1) \cup (1;\infty)$	✓ $x \geq 0$ ✓ $x \neq 1$ <b>OR/OF</b> ✓ $0 \leq x < 1$ ✓ $x > 1$ (2)
		<b>[8]</b>

**QUESTION/VRAAG 6**

6.1	$y = mx + c$ $m = \frac{5-1}{4-0}$ $m = 1$ $c = 1$ $g(x) = x + 1$ <b>OR/OF</b> $y = mx + c$ $5 = m(4) + 1$ $m = 1$ $g(x) = x + 1$	✓ substitution into gradient formula ✓ y-intercept (0 ; 1) (2)  <b>OR/OF</b>  ✓ substitute (4 ; 5) ✓ c = 1 (2)
6.2	$x^2 - 2x - 3 = 0$ $(x+1)(x-3) = 0$ $x = -1 \text{ or } x = 3$ $A(-1 ; 0) \quad B(3 ; 0)$	✓ y = 0 ✓ factors ✓ x-values (3)
6.3	$x = \frac{-1+3}{2} \quad \text{or} \quad x = \frac{-b}{2a} = \frac{-(-2)}{2(1)} \quad \text{or} \quad f'(x) = 2x - 2 = 0$ $x = 1$ $f(x) = x^2 - 2x - 3$ $y = (1)^2 - 2(1) - 3 \quad \text{or} \quad y = (x^2 - 2x + (-1)^2) - 3 - 1$ $y = -4 \quad \quad \quad = (x-1)^2 - 4$ $y \geq -4 \quad \text{or} \quad [-4; \infty)$	✓ x -value  ✓ substitution/ completing the square  ✓ answer (3)
6.4.1	<b>MN:</b> $y = (x^2 - 2x - 3) - (x + 1)$ $= x^2 - 3x - 4$ $6 = x^2 - 3x - 4$ $0 = x^2 - 3x - 10$ $0 = (x-5)(x+2)$ $x = 5 \text{ or } x = -2$ $\text{OT} = 2 \text{ or } \text{OT} = 5$ $\text{NA}$	✓ $x^2 - 3x - 4$ ✓ substituting y = 6  ✓ values of x  ✓ OT = 2 (4)
6.4.2	$y = x + 1 \text{ substitute } x = -2$ $= (-2) + 1$ $= -1$ $N(-2 ; -1)$	✓ substituting x = -2  ✓ answer (2)

<p>6.5</p>	$f'(x) = 2x - 2$ $2x - 2 = 1$ $x = \frac{3}{2}$ $f\left(\frac{3}{2}\right) = \frac{-15}{4}$ $y + \frac{15}{4} = 1\left(x - \frac{3}{2}\right) \quad \text{or} \quad -\frac{15}{4} = \frac{1}{2} + c$ $y = x - \frac{21}{4}$ <p><b>OR/OF</b></p> $x^2 - 2x - 3 = x + p$ $x^2 - 2x - 3 - x - p = 0$ <p>This equation will have equal roots, therefore:</p> $b^2 - 4ac = 0$ $(-3)^2 - 4(1)(-3 - p) = 0$ $9 + 12 + 4p = 0$ $p = \frac{-21}{4}$ $y = x - \frac{21}{4}$	$\checkmark f'(x) = 2x - 2$ $\checkmark 2x - 2 = 1$ $\checkmark x = \frac{3}{2}$ $\checkmark f\left(\frac{3}{2}\right) = \frac{-15}{4}$ $\checkmark \text{answer} \quad (5)$ <p><b>OR/OF</b></p> $\checkmark \text{equating}$ $\checkmark \text{equal roots}$ $\checkmark \text{substitution}$ $\checkmark \text{simplification}$ $\checkmark \text{answer} \quad (5)$
<p>6.6</p>	$k < \frac{-21}{4}$	$\checkmark \text{answer} \quad (1)$
		<p><b>[20]</b></p>

**QUESTION/VRAAG 7**

<p>7.1.1</p>	$F = \frac{x[(1+i)^n - 1]}{i}$ $F = \frac{15\,000 \left[ \left( 1 + \frac{0,088}{4} \right)^{16} - 1 \right]}{\frac{0,088}{4}}$ $F = R283\,972,28$	<p>✓ <math>\frac{0,088}{4}</math> and <math>n = 16</math>                  ✓ substitution into correct formula                  ✓ answer</p> <p>(3)</p>
<p>7.1.2</p>	$A = R283\,972,28 - 100\,000 \left( 1 + \frac{0,088}{4} \right)^4$ $= R\,174\,877,60$ <p><b>OR/OF</b>                  Amount at end of 3 years:</p> $F = \frac{15\,000 \left[ \left( 1 + \frac{0,088}{4} \right)^{12} - 1 \right]}{\frac{0,088}{4}} - 100\,000$ $= R103\,459,12$ <p>Amount at end of 4 years:</p> $P(1+i)^n + \frac{x[(1+i)^n - 1]}{i}$ $= 103\,459,12 \left( 1 + \frac{0,088}{4} \right)^4 + \frac{15\,000 \left[ \left( 1 + \frac{0,088}{4} \right)^4 - 1 \right]}{\frac{0,088}{4}}$ $= R\,174\,877,60$	<p>✓ future value – amount including interest                  ✓ <math>100\,000 \left( 1 + \frac{0,088}{4} \right)^4</math>                  ✓ answer</p> <p><b>OR/OF</b></p> <p>✓ R15 000 including interest – R100 000</p> <p>✓ <math>\left( 1 + \frac{0,088}{4} \right)^4</math> on <math>P</math> and <math>x</math> in <math>F_v</math>                  ✓ method</p> <p>(3)</p>
<p>7.2.1</p>	$P = \frac{x[1 - (1+i)^{-n}]}{i}$ $1\,500\,000 = \frac{x \left[ 1 - \left( 1 + \frac{0,105}{12} \right)^{-12 \times 20} \right]}{\frac{0,105}{12}}$ $x = R14\,975,70$	<p>✓ <math>i = \frac{0,105}{12}</math>                  ✓ <math>n = 240</math>                  ✓ substitution into correct formula                  ✓ answer</p> <p>(4)</p>

<p>7.2.2</p>	$P = \frac{x[1 - (1 + i)^{-n}]}{i}$ $P = \frac{14\,975,70 \left[ 1 - \left( 1 + \frac{0,105}{12} \right)^{-12 \times 8} \right]}{\frac{0,105}{12}}$ <p><math>P = R969\,927,74</math></p> <p><b>OR/OF</b></p> <p>Balance outstanding = A – F</p> $= 1\,500\,000 \left( 1 + \frac{0,105}{12} \right)^{144} - \frac{14\,975,70 \left[ \left( 1 + \frac{0,105}{12} \right)^{144} - 1 \right]}{\frac{0,105}{12}}$ $= R5\,259\,229,61 - R4\,289\,302,47$ $= R969\,927,14$	<p>✓ R14 975,70 in P<sub>v</sub>-formula                  ✓✓ <math>n = 96</math></p> <p>✓ substitution into correct formula</p> <p>✓ answer (5)</p> <p><b>OR/OF</b></p> <p>✓ <math>n = 144</math> in A-formula                  ✓ <math>n = 144</math> in F<sub>v</sub>-formula                  ✓ R14 975,70                  ✓ A – F</p> <p>✓ answer (5)</p>
		<p><b>[15]</b></p>

**QUESTION/VRAAG 8**

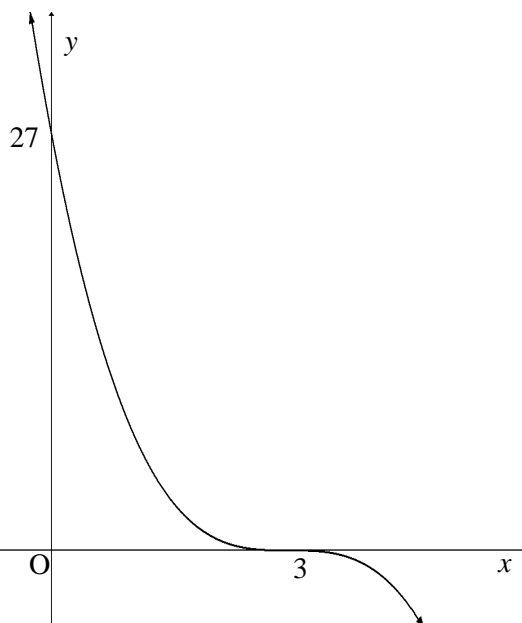
<p>8.1</p>	$f'(x) = \lim_{h \rightarrow 0} \frac{f(x+h) - f(x)}{h}$ $= \lim_{h \rightarrow 0} \frac{x^2 + 2xh + h^2 - 5 - x^2 + 5}{h}$ $= \lim_{h \rightarrow 0} \frac{h(2x+h)}{h}$ $= \lim_{h \rightarrow 0} (2x+h)$ $= 2x$ <p><b>OR/OF</b></p> $f(x+h) = (x+h)^2 - 5$ $= x^2 + 2xh + h^2 - 5$ $f(x+h) - f(x) = x^2 + 2xh + h^2 - 5 - (x^2 - 5)$ $= 2xh + h^2$ $f'(x) = \lim_{h \rightarrow 0} \frac{f(x+h) - f(x)}{h}$ $= \lim_{h \rightarrow 0} \frac{2xh + h^2}{h}$ $= \lim_{h \rightarrow 0} \frac{h(2x+h)}{h}$ $= \lim_{h \rightarrow 0} (2x+h)$ $= 2x$	<p>✓ <math>x^2 + 2xh + h^2 - 5</math>                  ✓ simplification                  ✓ factorisation                  ✓ <math>\lim_{h \rightarrow 0} (2x+h)</math>                  ✓ <math>2x</math></p> <p>(5)</p> <p><b>OR/OF</b></p> <p>✓ <math>x^2 + 2xh + h^2 - 5</math>                  ✓ simplification                  ✓ factorisation                  ✓ <math>\lim_{h \rightarrow 0} (2x+h)</math>                  ✓ <math>2x</math></p> <p>(5)</p>
<p>8.2.1</p>	$y = 3x^3 + 6x^2 + x - 4$ $\frac{dy}{dx} = 9x^2 + 12x + 1$	<p>✓ <math>9x^2</math>                  ✓ <math>12x</math>                  ✓ <math>1</math></p> <p>(3)</p>
<p>8.2.2</p>	$y(x-1) = 2x(x-1)$ $y = \frac{2x(x-1)}{x-1} \text{ if } x \neq 1$ $y = 2x$ $\frac{dy}{dx} = 2$	<p>✓ <math>y(x-1)</math>                  ✓ <math>2x(x-1)</math>                  ✓ <math>y = 2x</math>                  ✓ answer</p> <p>(4)</p>
<p><b>[12]</b></p>		

**QUESTION/VRAAG 9**

9.1.1	$g(x) = (x+5)(x-x_1)^2$ $20 = 5(x_1)^2$ $x_1^2 = 4$ $x_1 = 2$ $g(x) = (x+5)(x-2)^2$ $g(x) = (x+5)(x^2 - 4x + 4)$ $g(x) = x^3 + x^2 - 16x + 20$	<p>✓ <math>(x+5)</math></p> <p>✓ repeated root ✓ <math>x_1 = 2</math></p> <p>✓ <math>g(x) = (x+5)(x^2 - 4x + 4)</math></p> <p>(4)</p>
9.1.2	$g(x) = x^3 + x^2 - 16x + 20$ $g'(x) = 3x^2 + 2x - 16$ $3x^2 + 2x - 16 = 0$ $(3x+8)(x-2) = 0$ $x = \frac{-8}{3} \text{ or } x = 2$ $R\left(\frac{-8}{3}; \frac{1372}{27}\right) \text{ or } R(-2,67; 50,81)$ $P(2; 0)$	<p>✓ derivative</p> <p>✓ equating to zero ✓ factors</p> <p>✓ co-ordinates of R ✓ co-ordinates of P</p> <p>(5)</p>
9.1.3	$g''(x) = 6x + 2$ $g''(0) = 2$ <p>∴ concave up</p> <p><b>OR/OF</b></p> $g''(x) = 6x + 2$ $6x + 2 = 0$ $x = -\frac{1}{3} \text{ is the point of inflection}$ <p>∴ concave up</p>	<p>✓ <math>g''(x) = 6x + 2</math> ✓ <math>g''(0) = 2</math> ✓ conclusion</p> <p>(3)</p> <p><b>OR/OF</b></p> <p>✓ <math>g''(x) = 6x + 2</math> ✓ <math>x = -\frac{1}{3}</math></p> <p>✓ conclusion</p> <p>(3)</p>



9.2

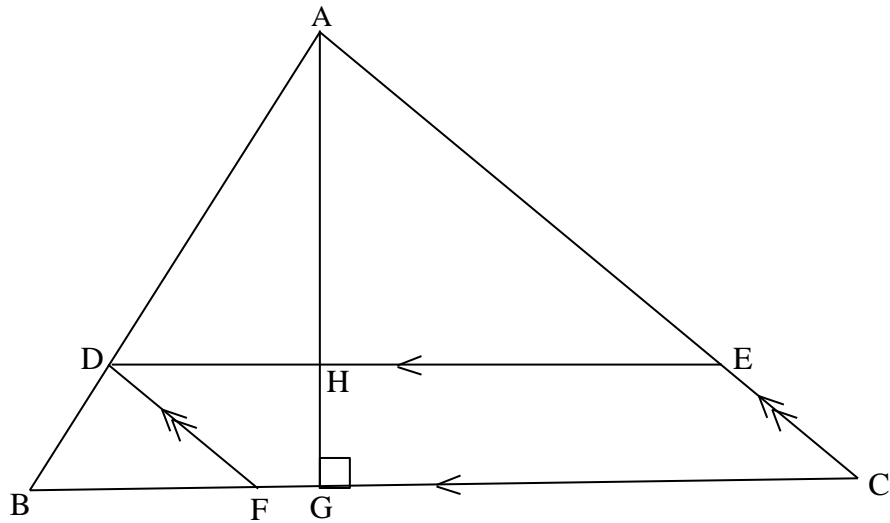


- ✓  $y$  – intercept of a cubic graph
- ✓ point of inflection and stationary point,  $x = 3$
- ✓ concave up for  $x < 3$  and concave down for  $x > 3$

(3)

[15]

**QUESTION/VRAAG 10**

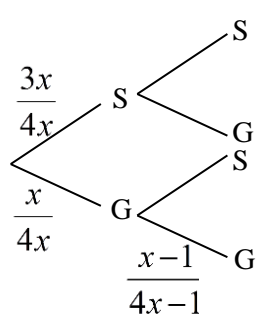


10.1	$\frac{AH}{HG} = \frac{3}{2}$	✓ answer (1)
10.2	Area of a parallelogram = base $\times$ $\perp$ height $\text{Area} = \frac{3}{5}(5-t) \cdot \frac{2}{5}t$ $\text{Area} = \frac{6}{25}(5-t)t$ $A(t) = -\frac{6}{25}t^2 + \frac{6}{5}t$ $A'(t) = -\frac{12}{25}t + \frac{6}{5}$ $-\frac{12}{25}t + \frac{6}{5} = 0$ $12t - 30 = 0$ $t = \frac{30}{12} \text{ or } \frac{5}{2}$	$\checkmark \frac{2}{5}t$ $\checkmark \frac{3}{5}(5-t)$ $\checkmark A(t) = -\frac{6}{25}t^2 + \frac{6}{5}t$ $\checkmark -\frac{12}{25}t + \frac{6}{5}$ ✓ answer (5)
		<b>[6]</b>

**QUESTION/VRAAG 11**

11.1.1	$7^5 = 16\ 807$	✓✓ answer (2)
11.1.2	$7 \times 6 \times 5 \times 4 \times 3$ $= \frac{7!}{2!} = 2520$	✓ $7 \times 6 \times 5 \times 4 \times 3$ or $\frac{7!}{2!}$ ✓ answer (2)
11.2	$2 \times 7 \times 1 = 14$	✓✓✓ $2 \times 7 \times 1$ (3)
		[7]

**QUESTION/VRAAG 12**

12.1	$P(A \text{ or } B) = P(A) + P(B)$ $0,74 = 0,45 + y$ $y = 0,29$	✓ $P(A \text{ or } B) = P(A) + P(B)$ ✓ substitution ✓ answer (3)
12.2	 <p>Let the number of mystery gift bags = <math>x</math> The total number of bags = <math>4x</math></p> $\left(\frac{x}{4x}\right) \times \left(\frac{x-1}{4x-1}\right) = \frac{7}{118}$ $\frac{1}{4} \times \frac{x-1}{4x-1} = \frac{7}{118}$ $\frac{x-1}{4x-1} = \frac{28}{118}$ $118x - 118 = 112x - 28$ $x = 15$	<p>✓ <math>4x</math></p> <p>✓ <math>\left(\frac{x}{4x}\right)</math> or <math>\left(\frac{1}{4}\right)</math></p> <p>✓ <math>\left(\frac{x-1}{4x-1}\right)</math></p> <p>✓ <math>\frac{1}{4} \times \frac{x-1}{4x-1}</math></p> <p>✓ equating to <math>\frac{7}{118}</math></p> <p>✓ answer (6)</p>

	<p><b>OR/OF</b></p> <p><math>P(\text{gift and gift}) = P(\text{gift at first draw}) \times P(\text{gift at second draw})</math></p> $\frac{7}{118} = \frac{1}{4} \times P(\text{gift at second draw})$ <p><math>P(\text{gift at second draw}) = \frac{7}{118} \div \frac{1}{4}</math></p> $= \frac{14}{59}$ <p>Therefore: <math>P(\text{gift at first draw}) = \frac{15}{60}</math></p> <p>And: 15 bags had mystery gifts inside</p>	<p><b>OR/OF</b></p> $\checkmark \frac{1}{4}$ $\checkmark \frac{1}{4} \times P(\text{gift at 2}^{\text{nd}} \text{ draw})$ $\checkmark \frac{7}{118} = \frac{1}{4} \times P(\text{gift at 2}^{\text{nd}} \text{ draw})$ $\checkmark \frac{14}{59}$ $\checkmark \frac{15}{60}$ $\checkmark \text{answer} \quad (6)$
		<b>[9]</b>

**TOTAL/TOTAAL: 150**